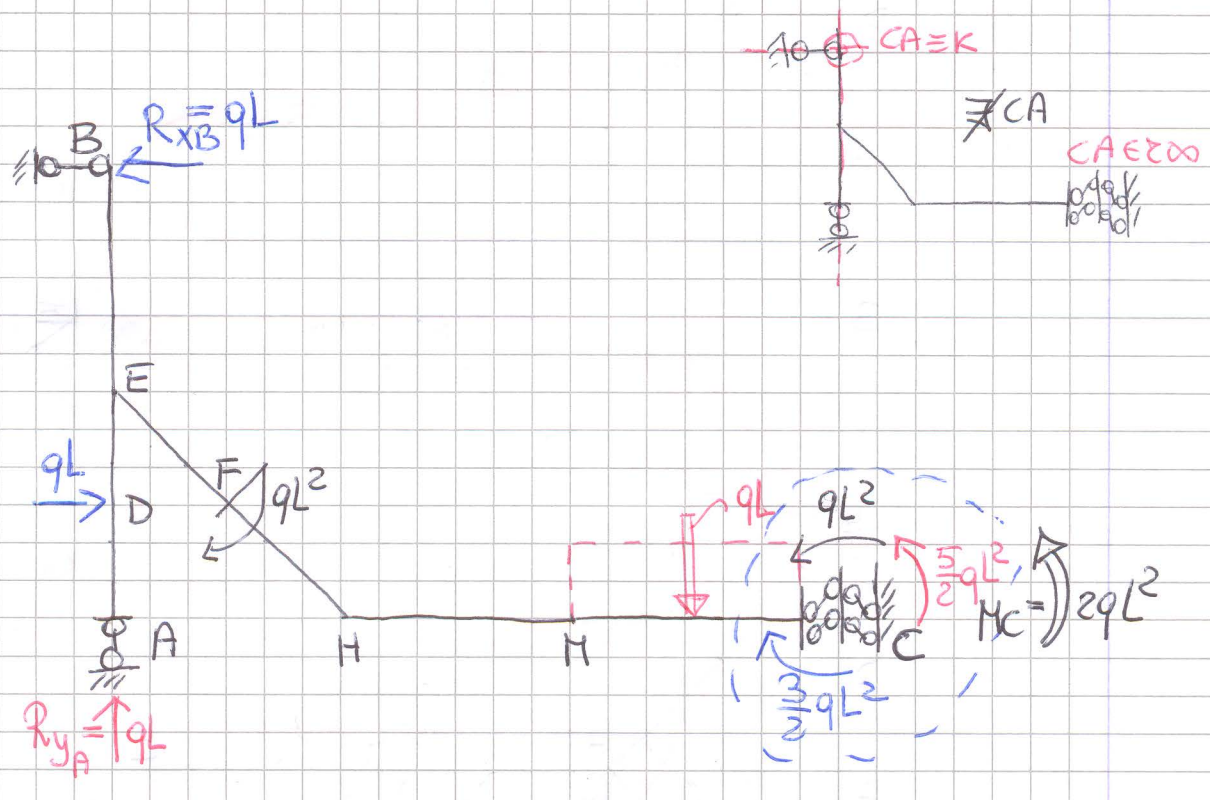
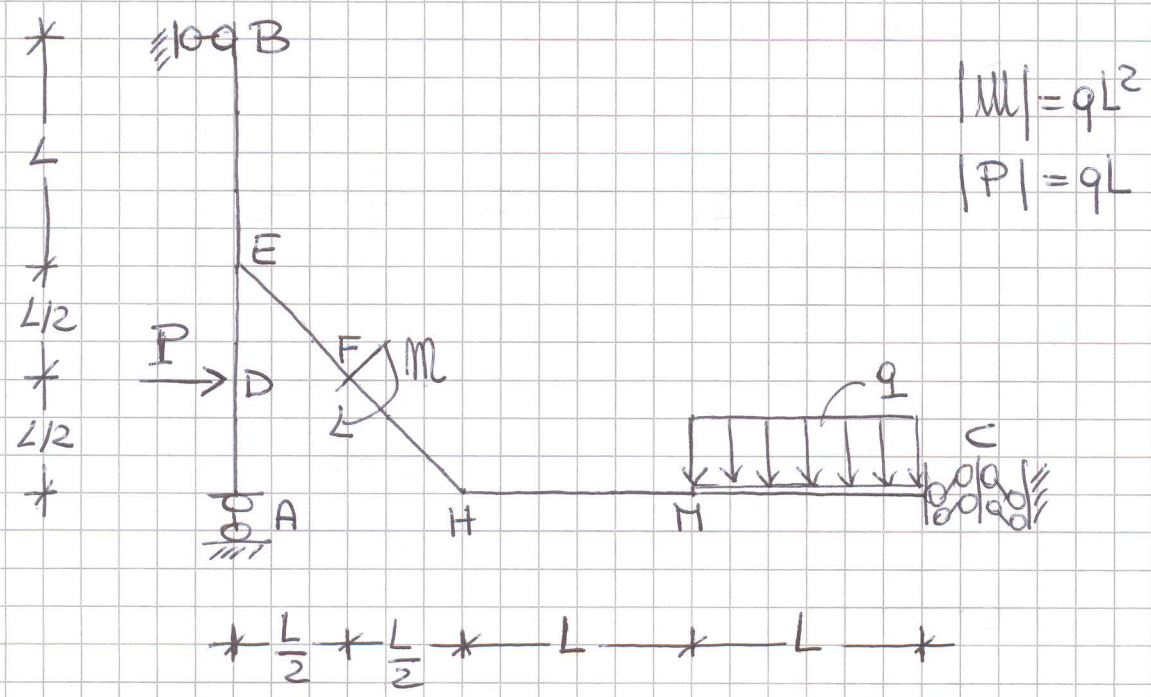


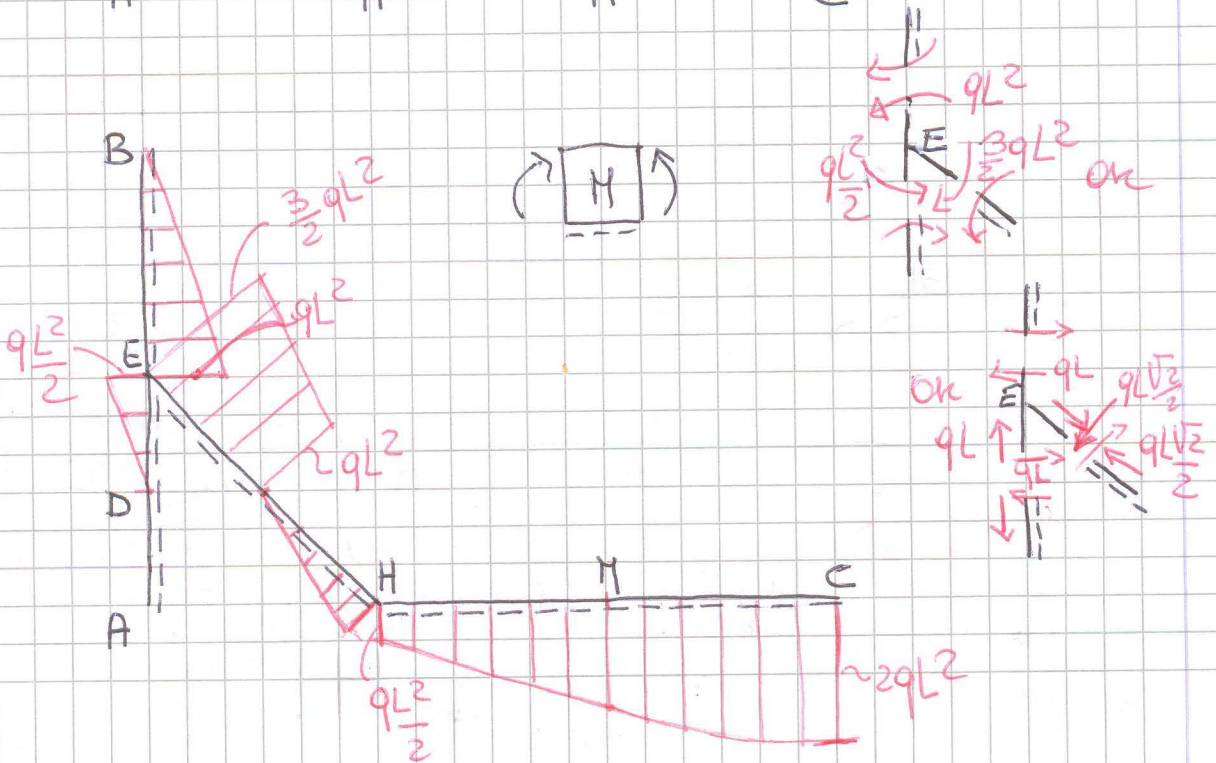
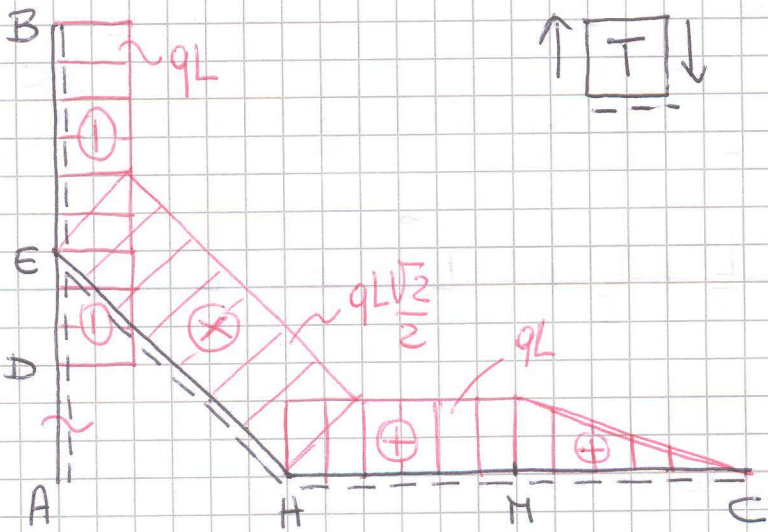
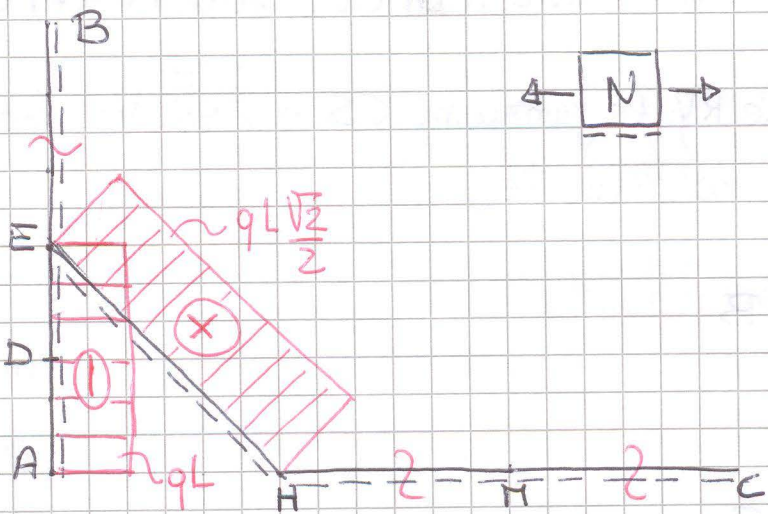
Prova scritta del 7/2/2013

Corsi: PROF: PISANO CdL Arch CU; PROF: FUSCHI CdL Arch Triem.
CdL SCBAA

Determinare le RV, le funzioni CS e i relativi diagrammi per la struttura seguente.



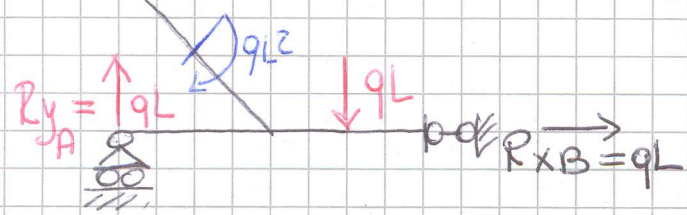
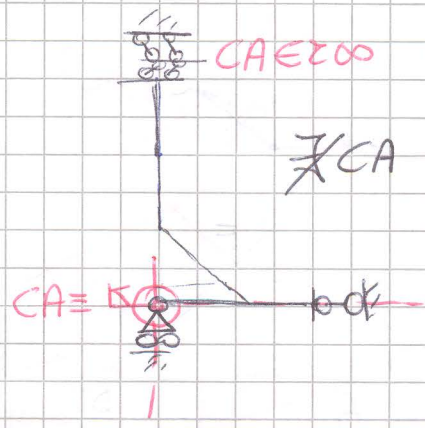
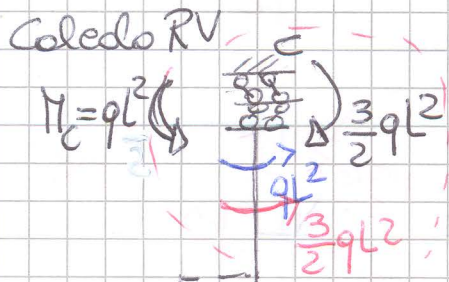
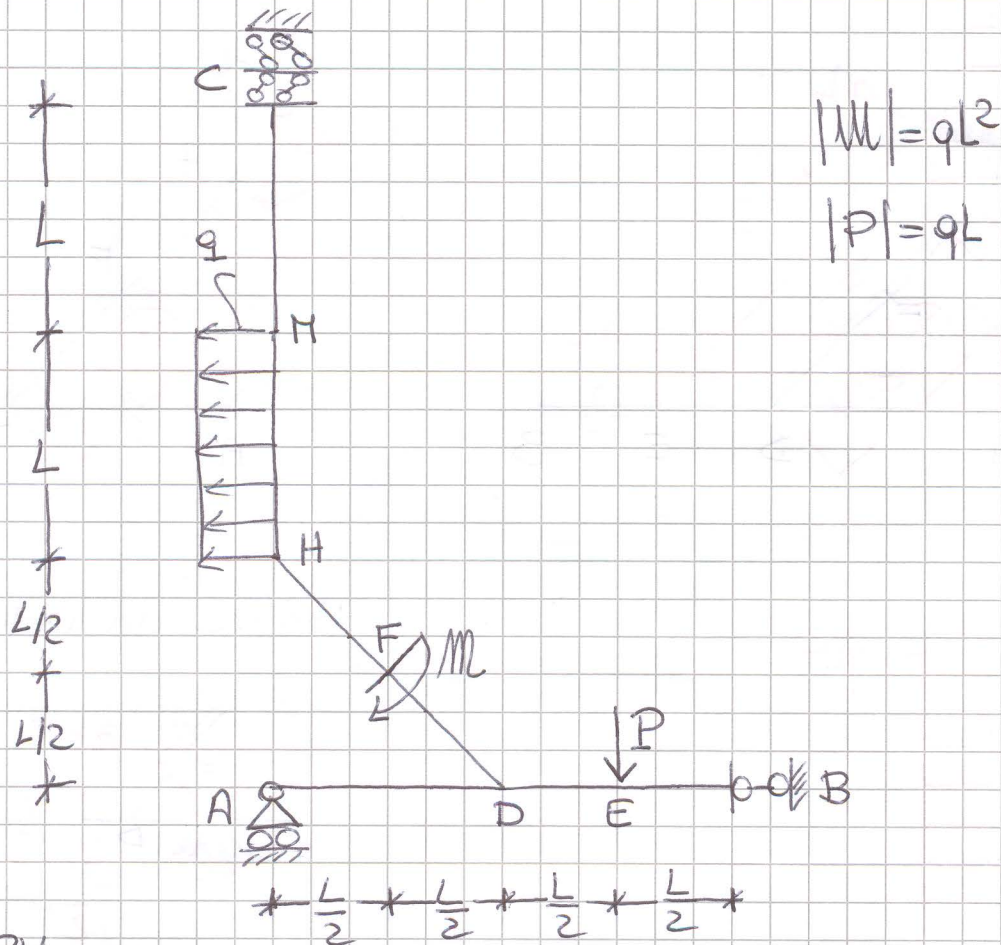
Diagrammi CS



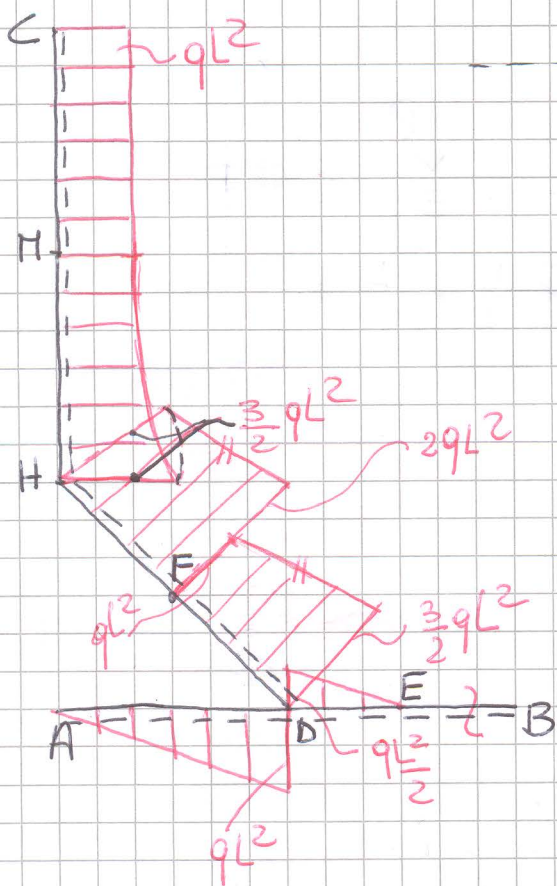
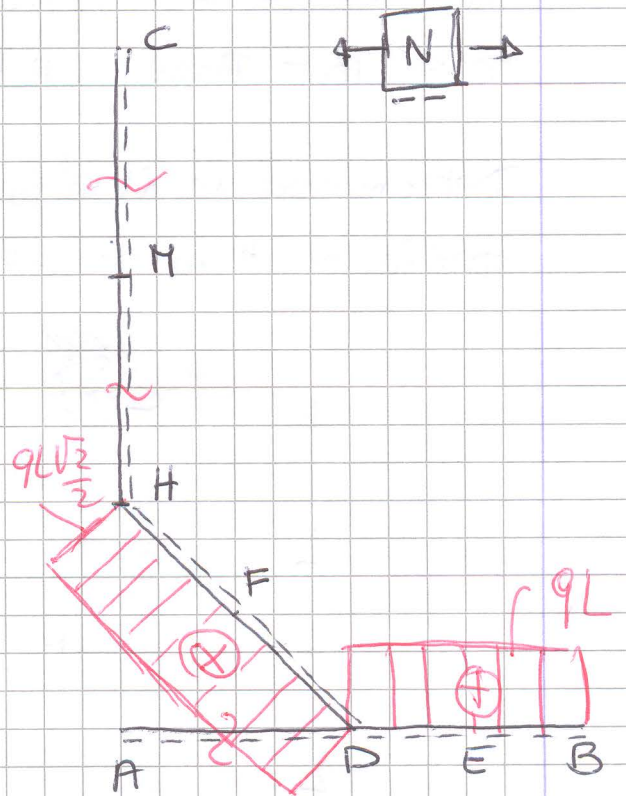
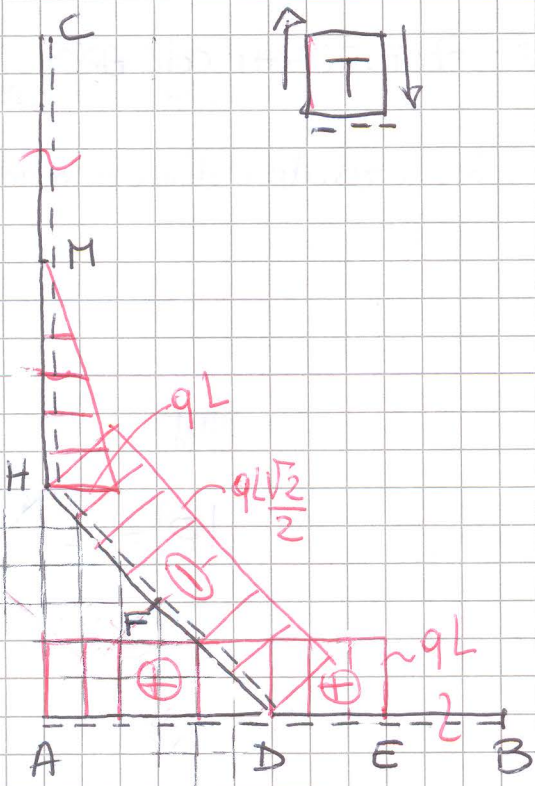
PROVA SCRITTA DEL 7/2/2013

CORSI PROF. PISANO CdL ARCH. CU ; PROF. FUSCHI CdL ARCH. TRIEN.
CdL SCBAA

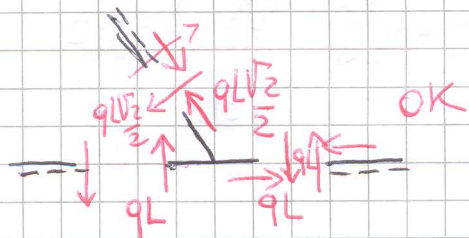
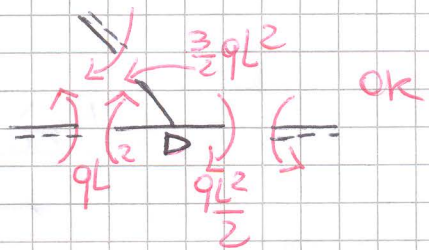
Determinare le RV, le funzioni CS e i relativi diagrammi per la struttura seguente.



Diagrammi CS



Verifica del nodo D

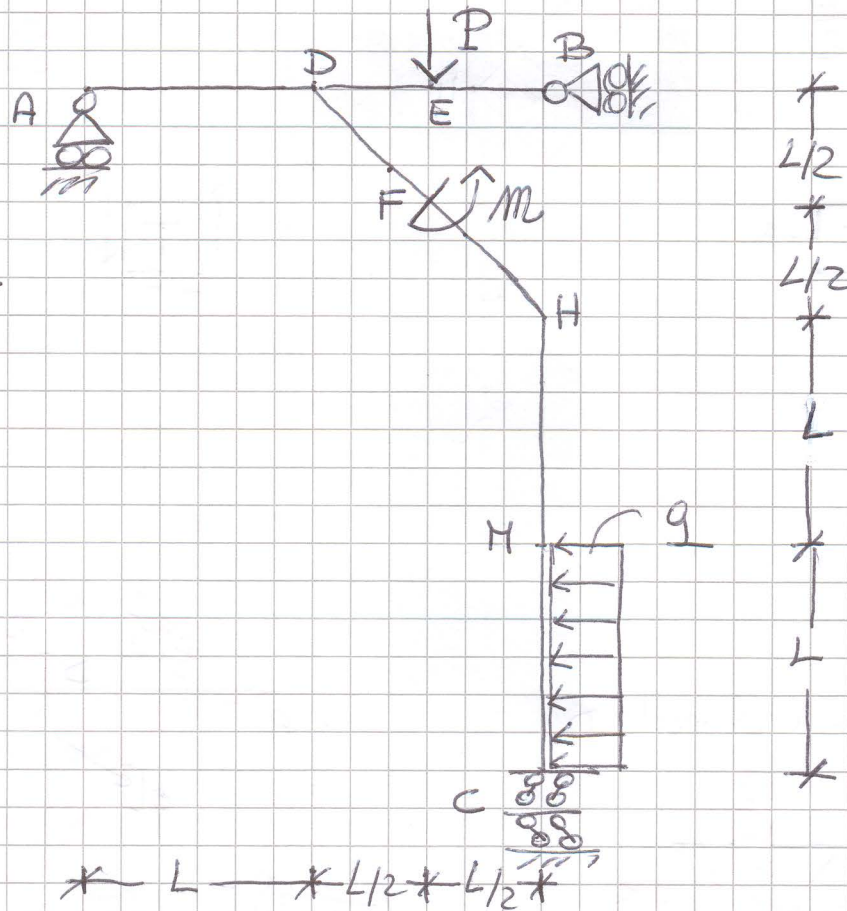


Prova scritta del 7/2/2013

CORSI: PROF. PISANO CdL Arch. CU ; PROF. FUSCHI CdL Arch. Triem.

coll SCBAA

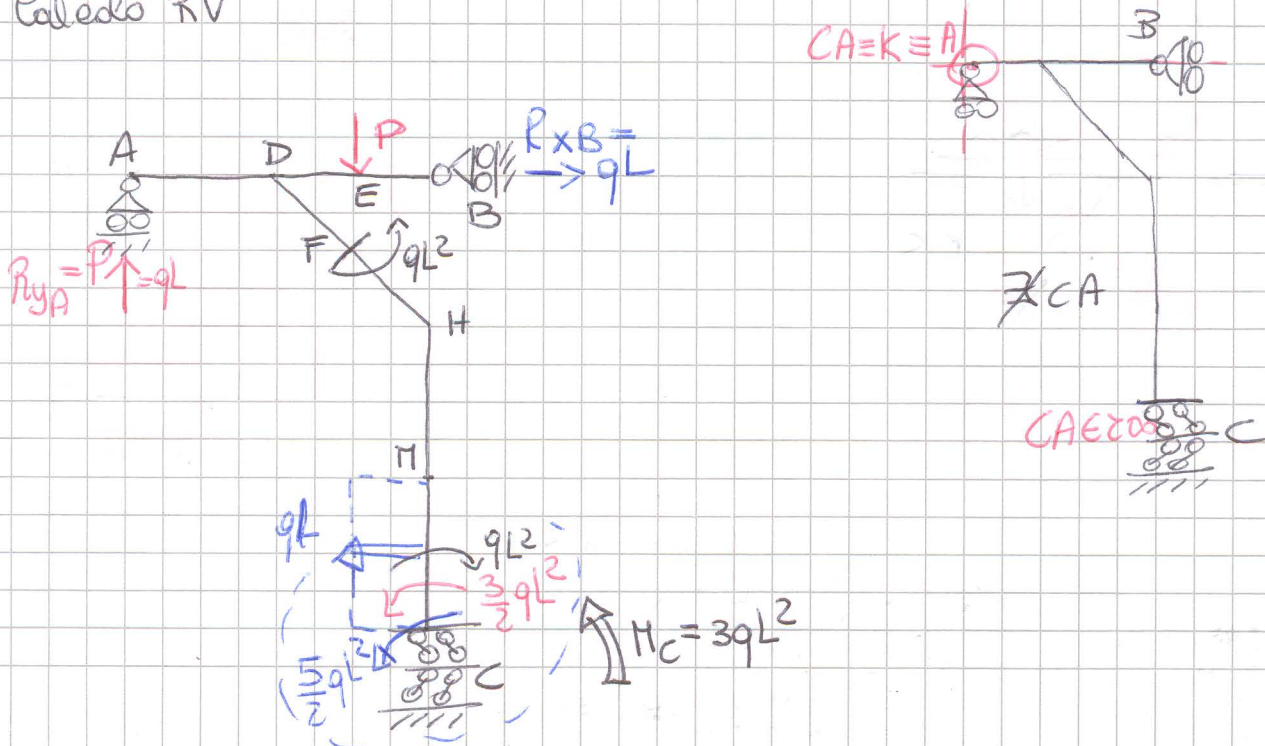
Determinare le RV, le funzioni Cs e i relativi diagrammi per la struttura seguente.



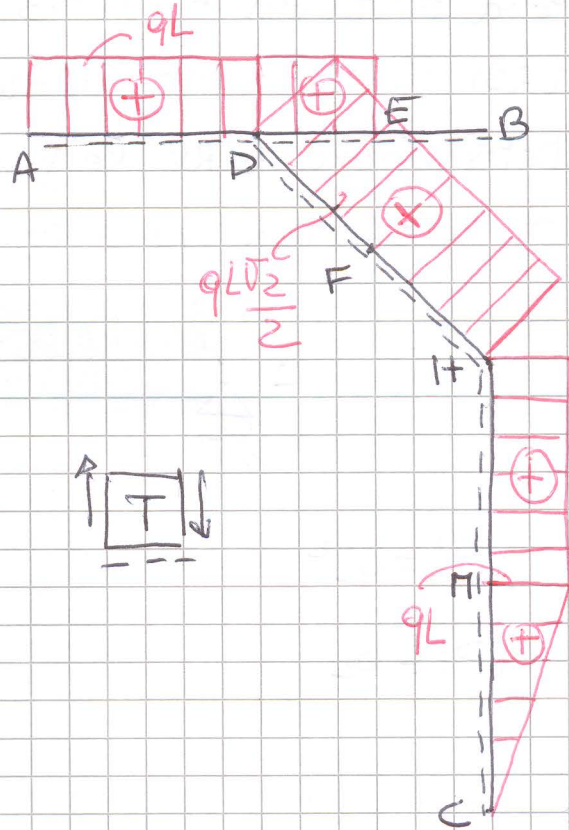
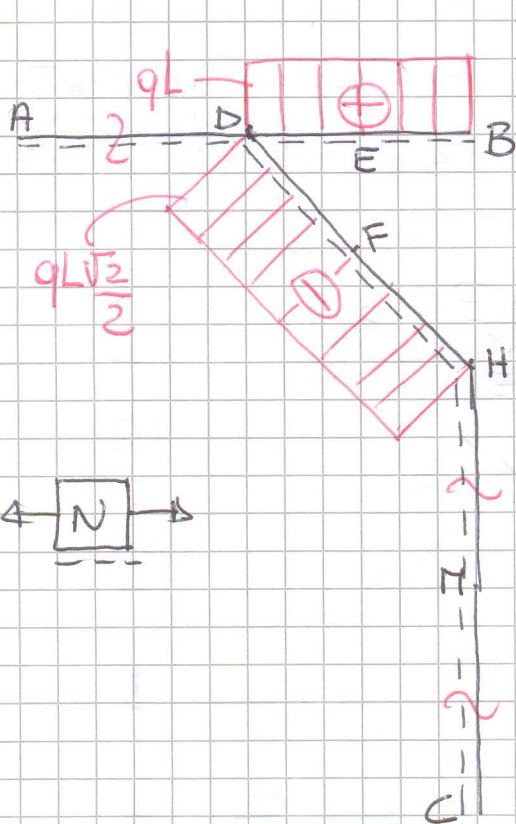
$$|M| = qL^2$$

$$|P| = qL$$

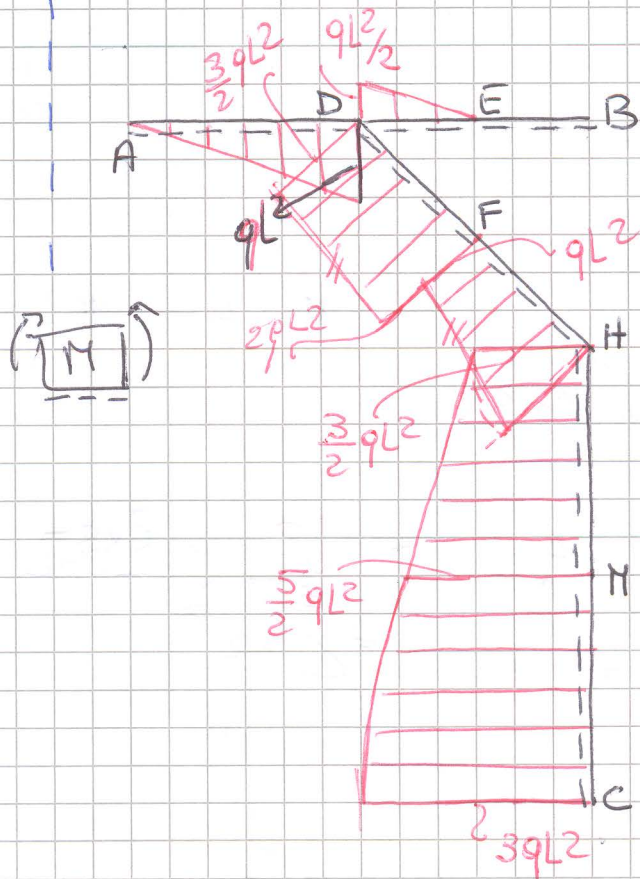
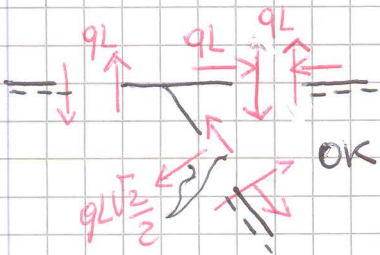
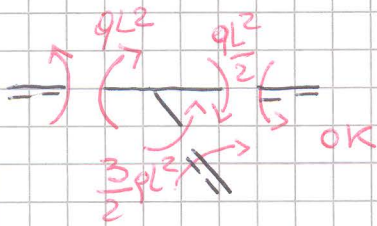
Calcolo RV



Diagrammi CS



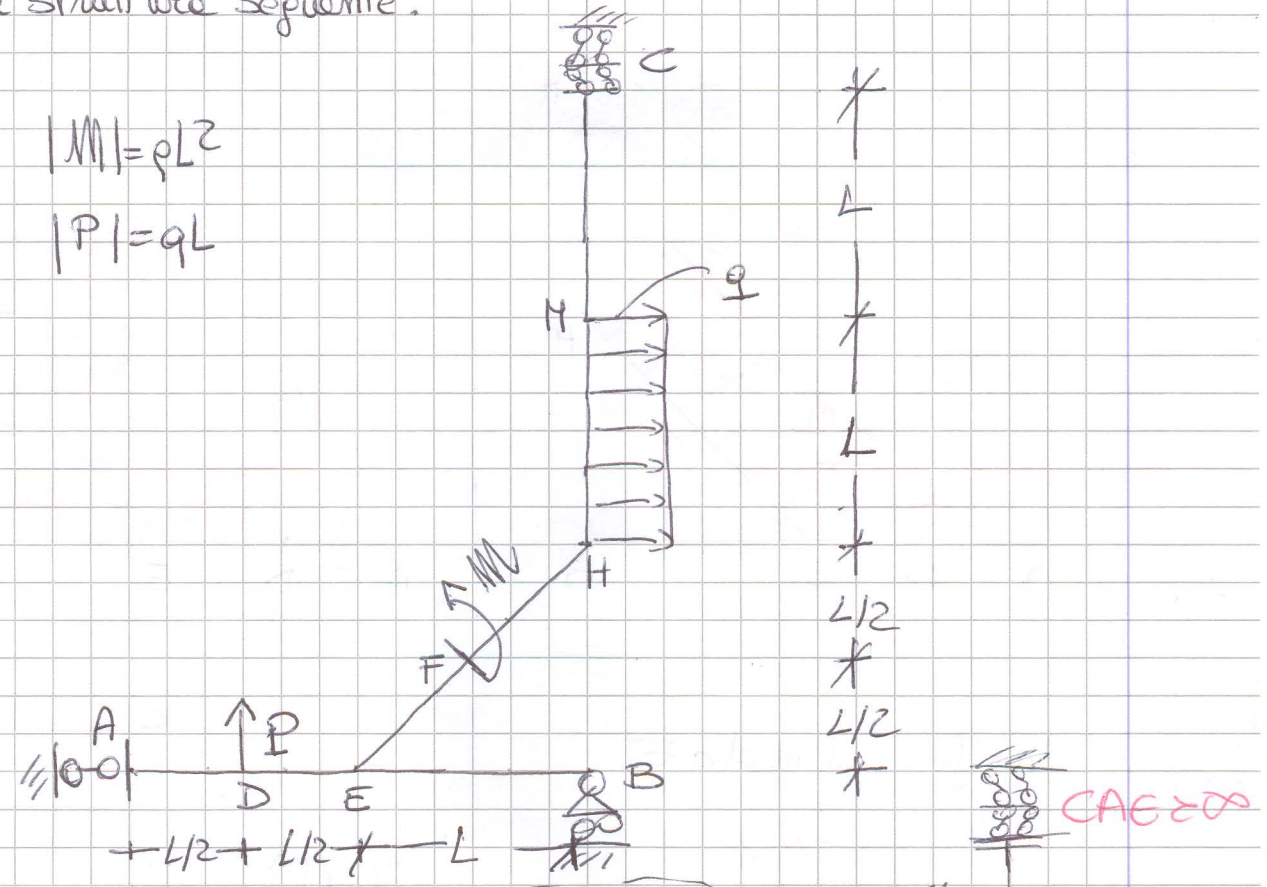
Verifica al modo D



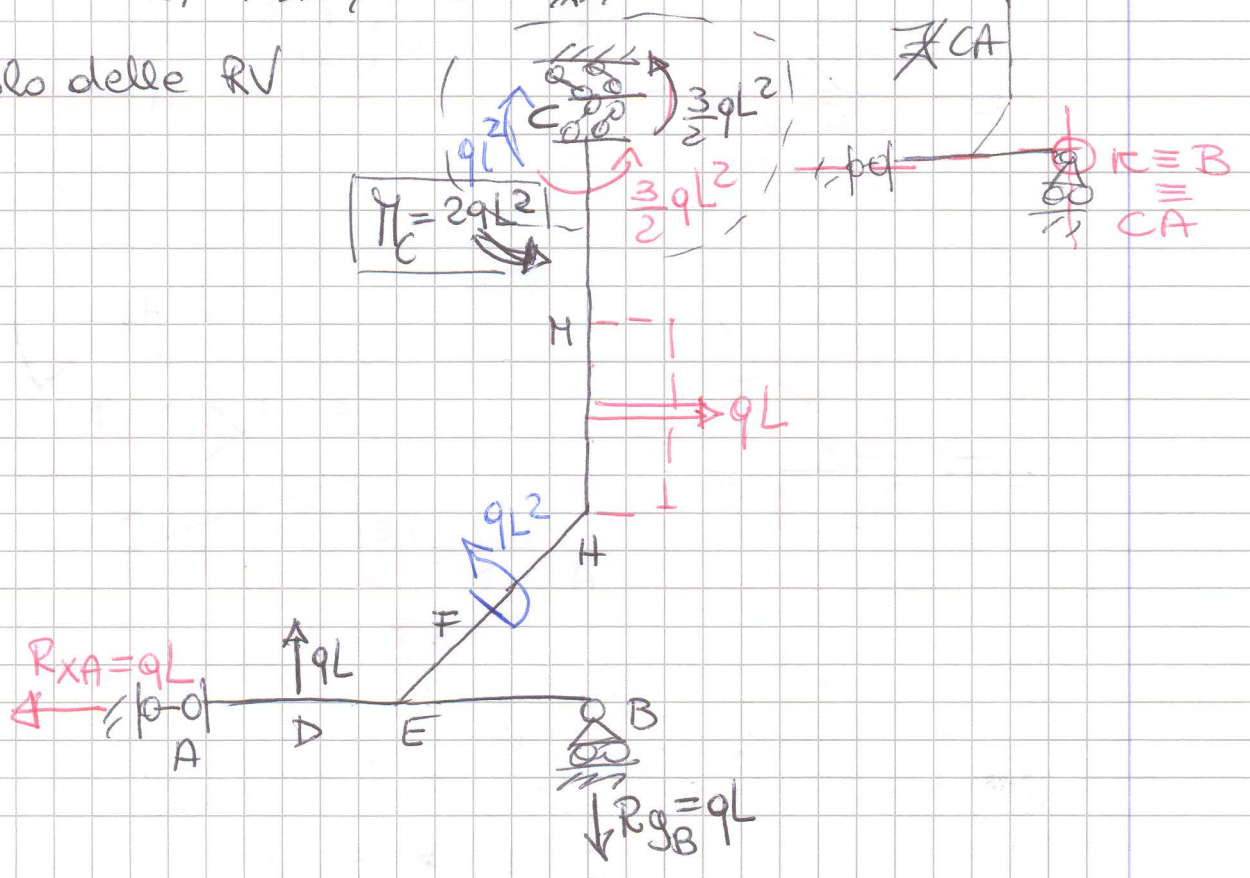
PROVA SCRITTA DEL 7/2/2013
 Corsi Prof. Pisano CdL ARCH CU; PROF. FUSCHI CdL ARCH Triem.
 CdL SCBAA

Determinare le RV, le funzioni CS e i relativi diagrammi per la struttura seguente.

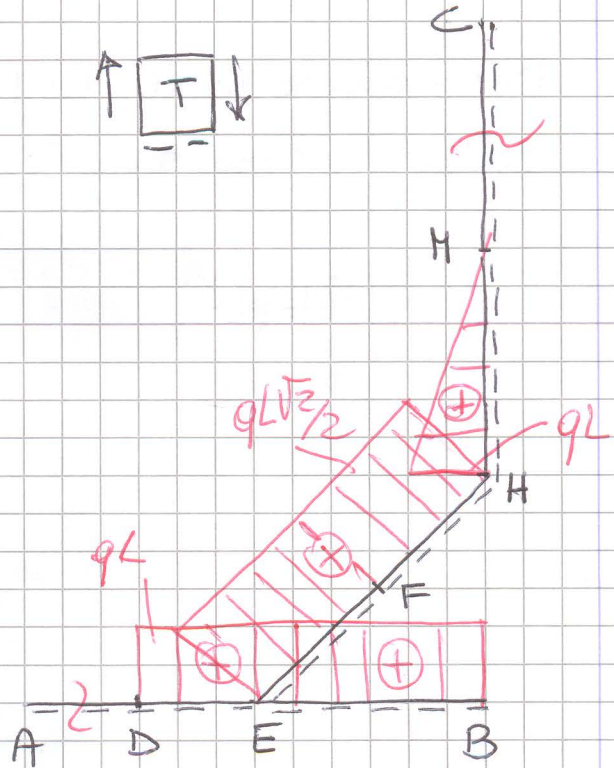
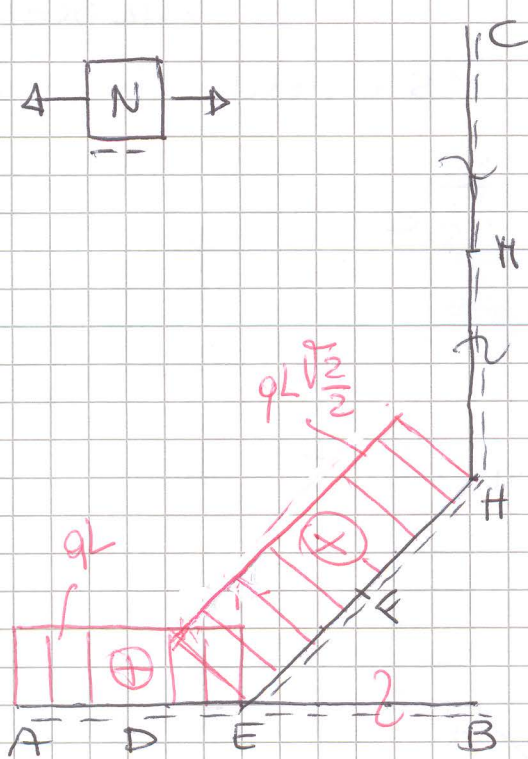
$|M| = qL^2$
 $|P| = qL$



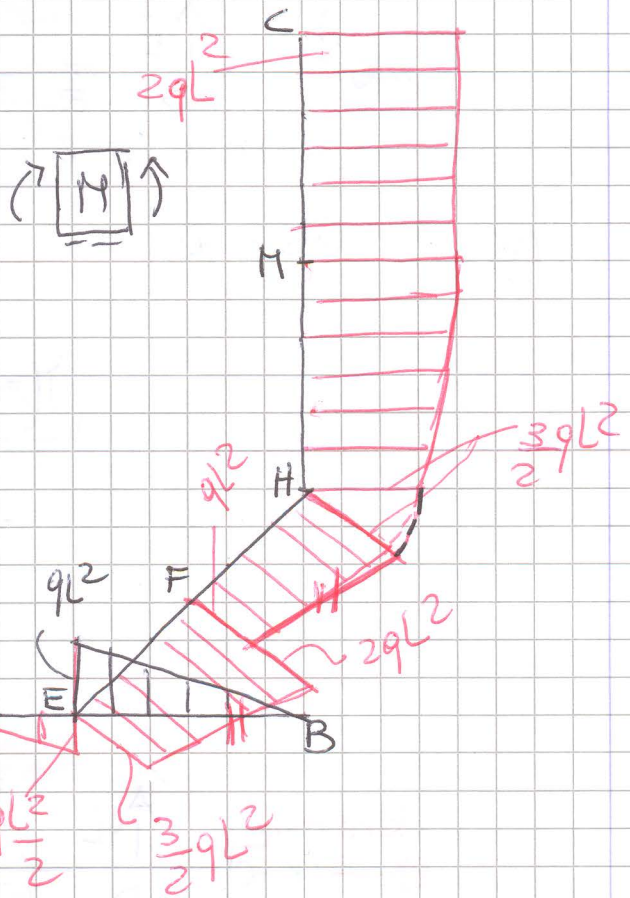
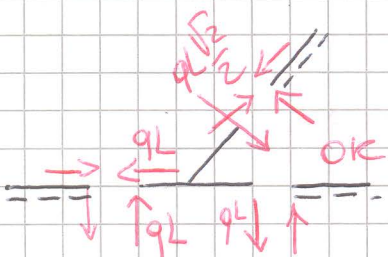
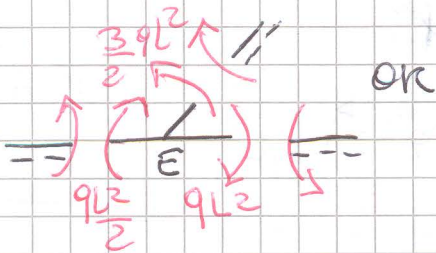
Calcolo delle RV



Diagrammi CS



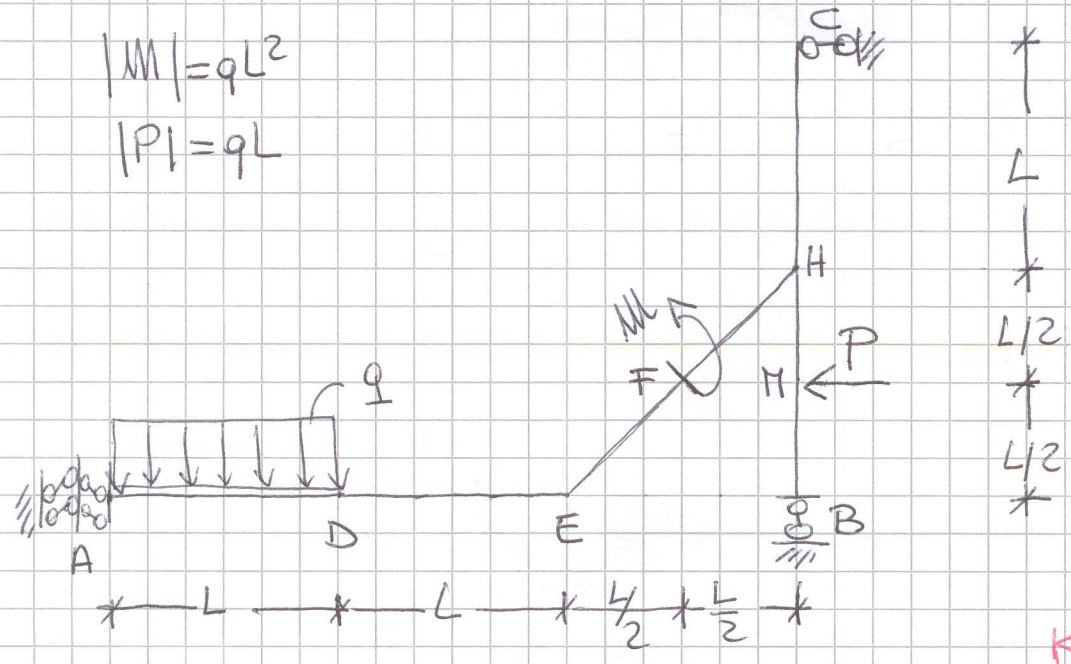
Verifica al nodo E



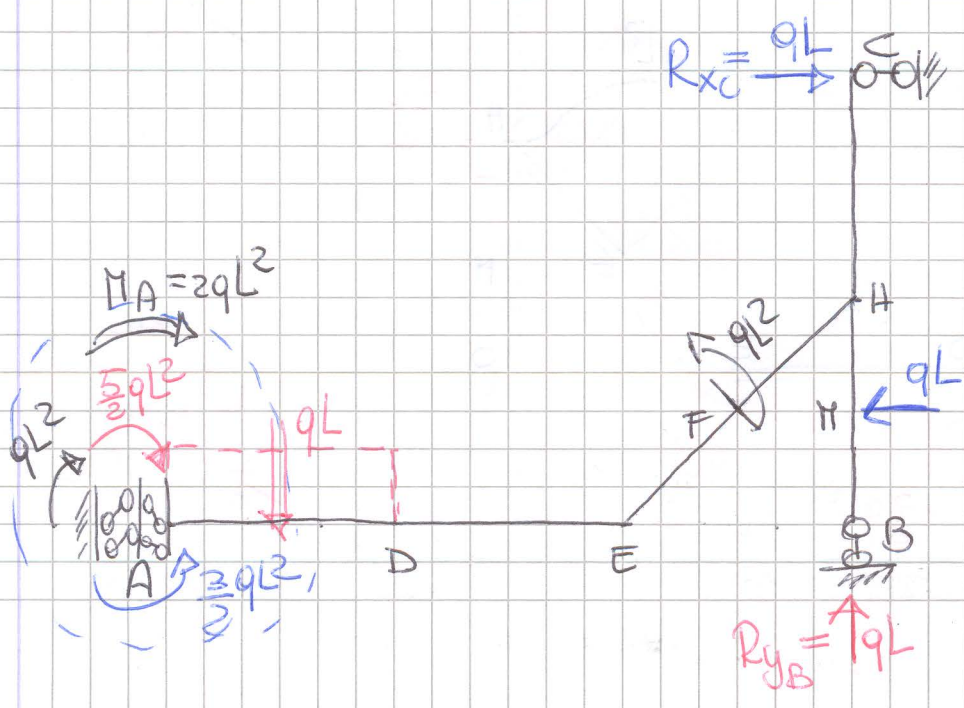
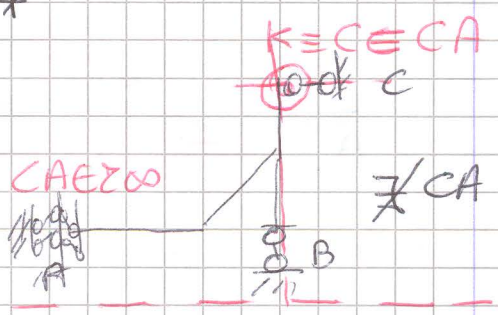
Prova scritta del 7/2/2013

CORSI PROF. PISANO CDL Arch. CV; PROF. FUSCHI CdL Arch. Triem. CdL SCBAA

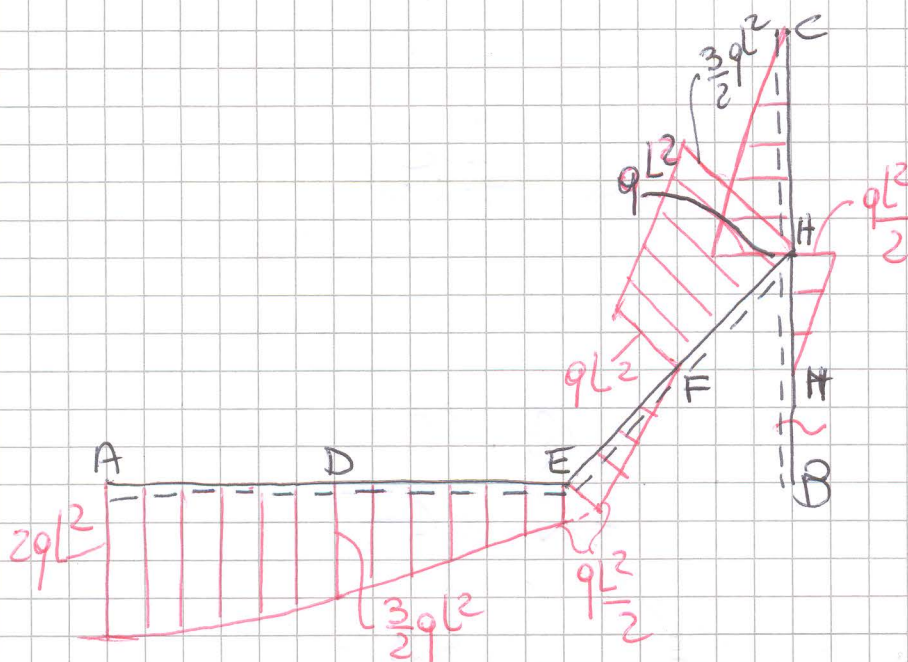
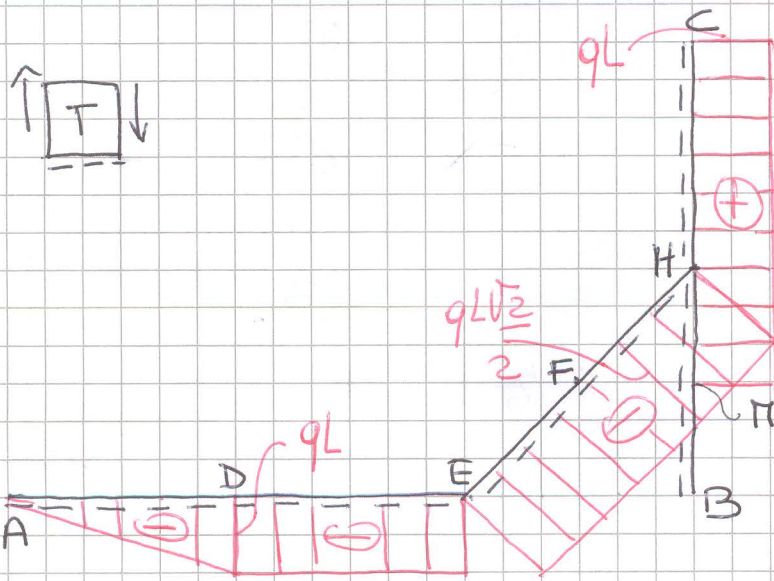
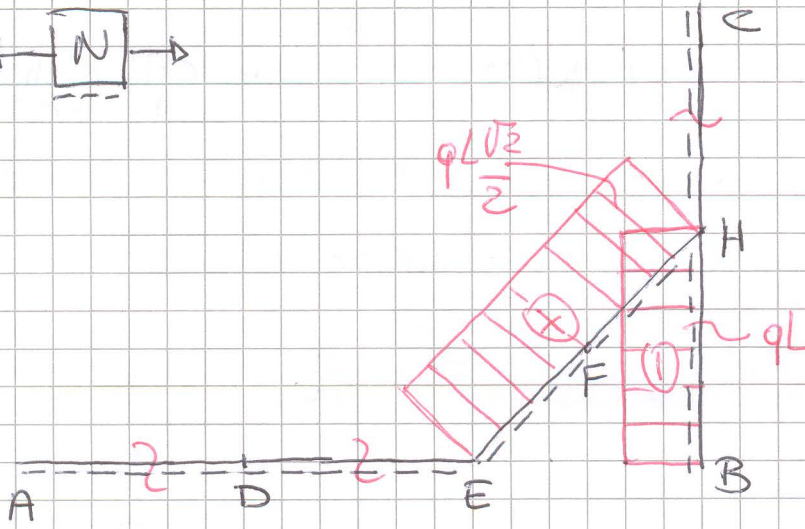
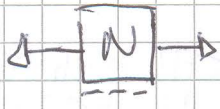
Determinare le RV, le funzioni caratteristiche di sollecitazione e i relativi diagrammi per la struttura seguente



Calcolo RV



Diagrammi ES



Verifica al modo II

